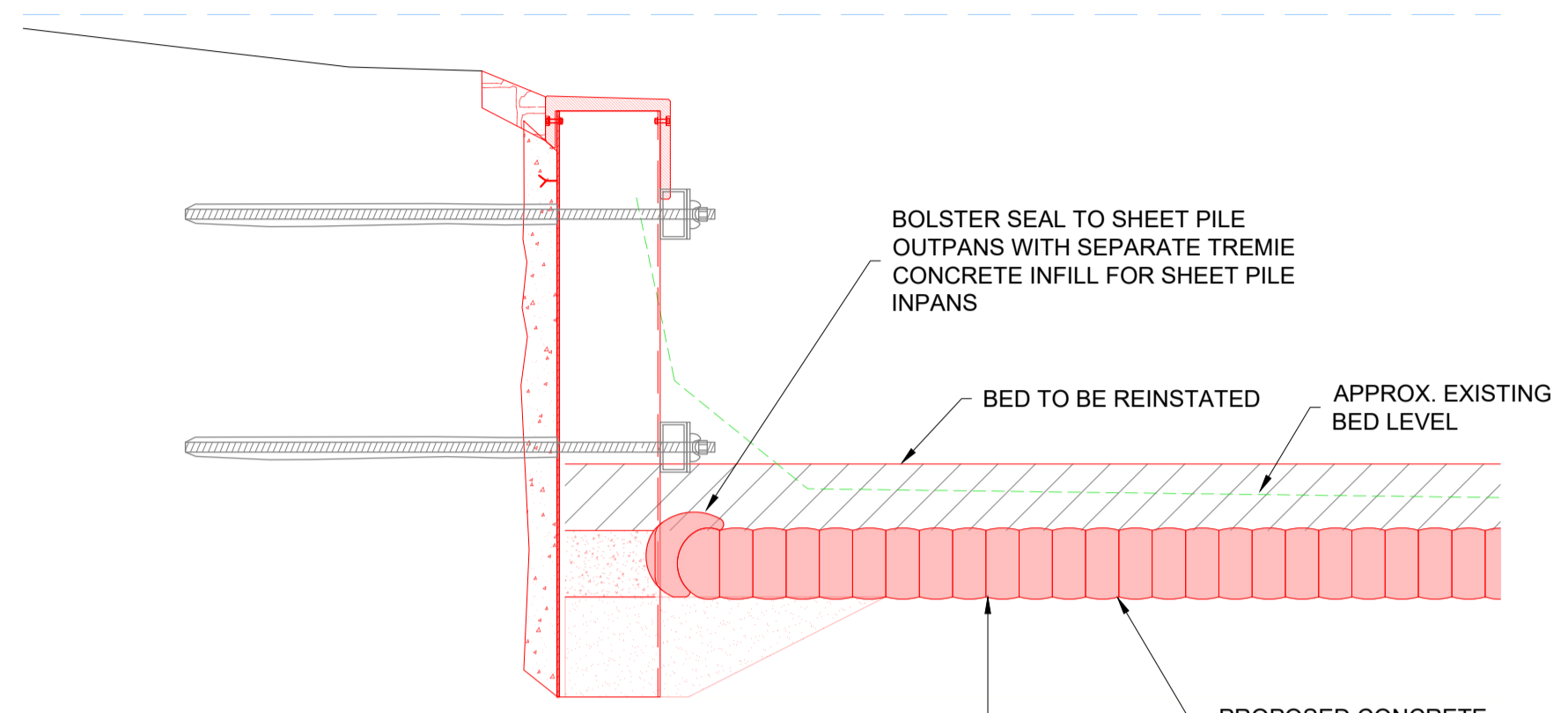


Drawing Number  
3255-MHB-DRG-120

1  
2  
3  
4  
5  
6  
7  
8  
9  
10  
11

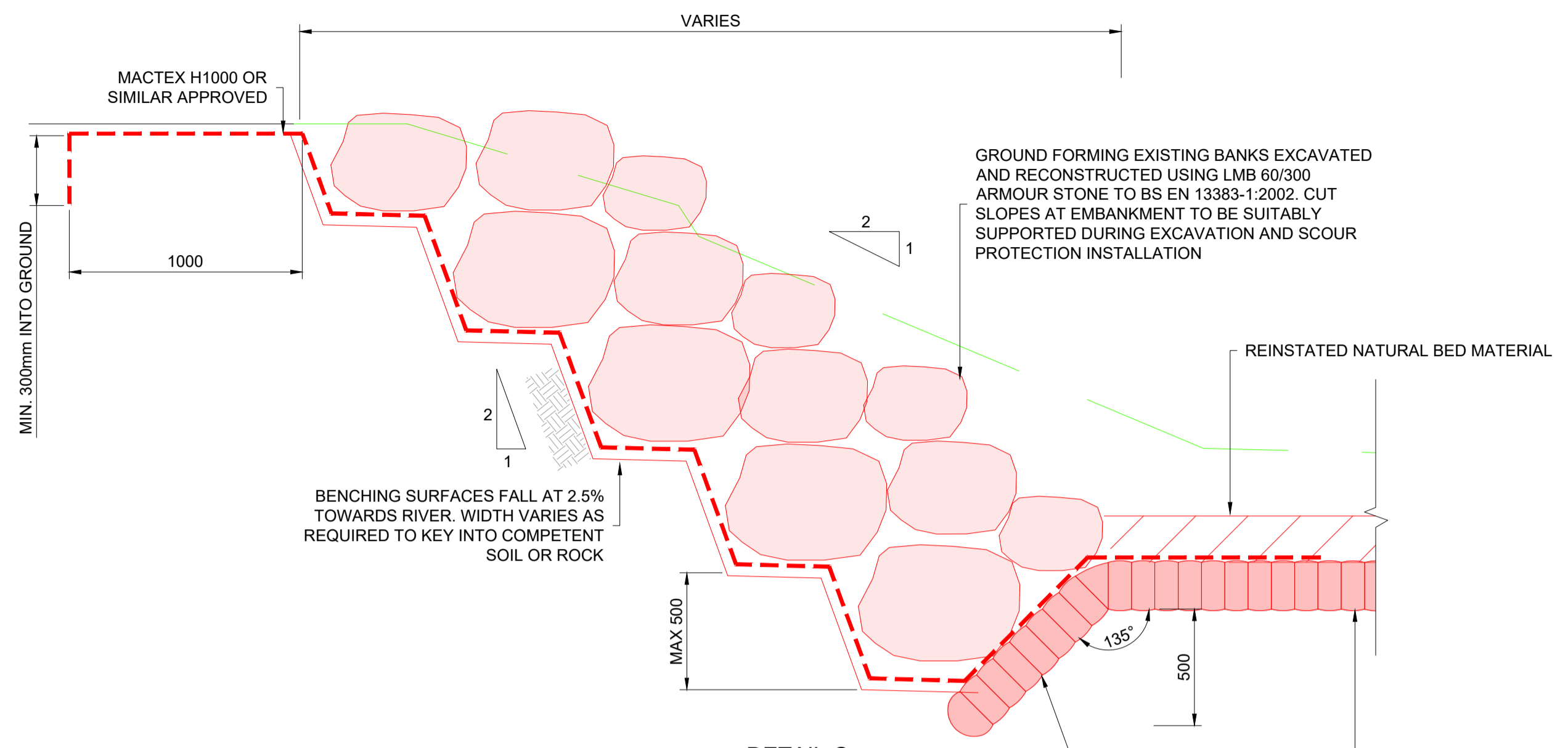
SHEET PILES TO BE LOCATED SUCH THAT ALL REPAIRS ARE ENCAPSULATED. SHEET PILES ALL TIED TOGETHER



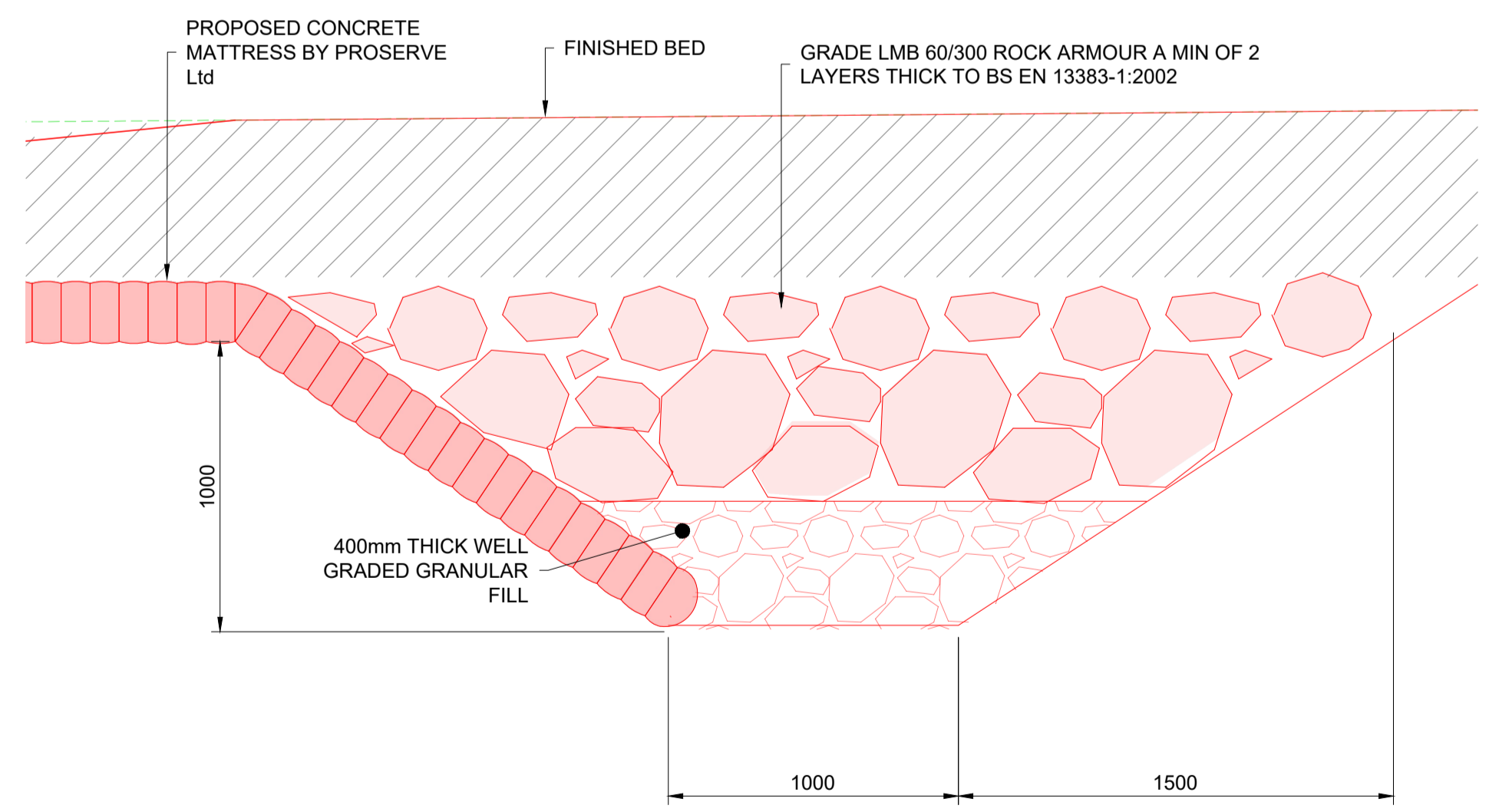
**DETAIL A**  
MATTRESS - SHEETPILE CONNECTION DETAIL  
SCALE 1:20

GROUND LEVEL TO UPFILLED (OR REDUCED) AND LEVELED PRIOR TO INSTALLING NEW MATTRESS WHERE REQUIRED

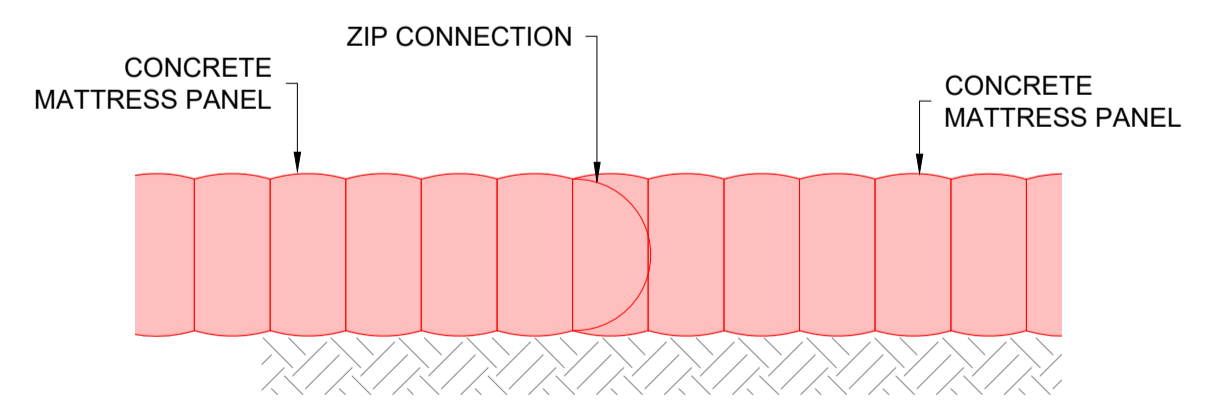
MATERIAL FOR THE UPFILL CAN BE OBTAINED ON SITE



**DETAIL C**  
RIVER BANK RIP-RAP  
SCALE 1:20



**DETAIL B**  
MATTRESS EDGE PROTECTION  
SCALE 1:20



**DETAIL D**  
BALL AND SOCKET JOIN DETAIL IN CONCRETE MATTRESS  
SCALE 1:10

DO NOT SCALE. Contractor to check all dimensions and report any omissions or errors

- GENERAL NOTES**
1. ALL DIMENSIONS IN MILLIMETRES UNLESS STATED OTHERWISE.
  2. THE CONTRACTOR TO CHECK ALL DIMENSIONS ON SITE AND REPORT ANY DIFFERENCE TO THE DESIGNER.
  3. ALL LEVELS ARE IN METRES ABOVE ORDNANCE DATUM UNLESS STATED OTHERWISE.
  4. THIS DRAWING SHALL BE READ IN CONJUNCTION WITH 3255-MHB-DRG-001 AND ALL DRAWINGS LISTED THEREIN
  4. DRAWINGS BASED ON TOPOGRAPHICAL SURVEY CARRIED OUT IN APR 2021 BY ASPECT LAND + HYDROGRAPHIC SURVEYS AND RECORD INFORMATION SUPPLIED BY NETWORK RAIL.

**KEY:**

- BED MATERIAL TO BE REMOVED
- WATER LEVEL PROFILE APRIL 2021
- PROPOSED WORKS
- TEMPORARY WORKS

B01	28/04/23	FOR APPROVAL	BZ	CS	-
P02	05/04/23	DRAFT	BZ	CS	-
P01	09/03/23	DRAFT	BZ	-	-
Rev	Date	Description of Revisions	Drawn	Chkd	Appr

FOR APPROVAL



**MHB** CONSULTING CIVIL ENGINEERS

MHB Consultants Ltd  
3rd Floor  
52 St Enoch Sq  
Glasgow G1 4AA  
0141 248 5154  
info@mhbconsultants.com  
www.mhbconsultants.com

Project  
**BRIDGE OF DEE SCOUR PROTECTION**

Drawing Title  
**PROPOSED MATTRESS DETAILS**

Scale(s) AS SHOWN	Drawn BZ	Date 16/02/2023	Checked CS	Date 05/04/2023	Approved -	Date -
Drawing Number 3255-MHB-DRG-120	Revision B01					